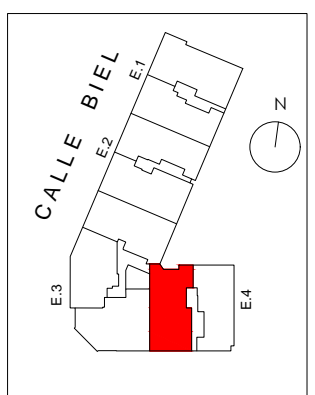
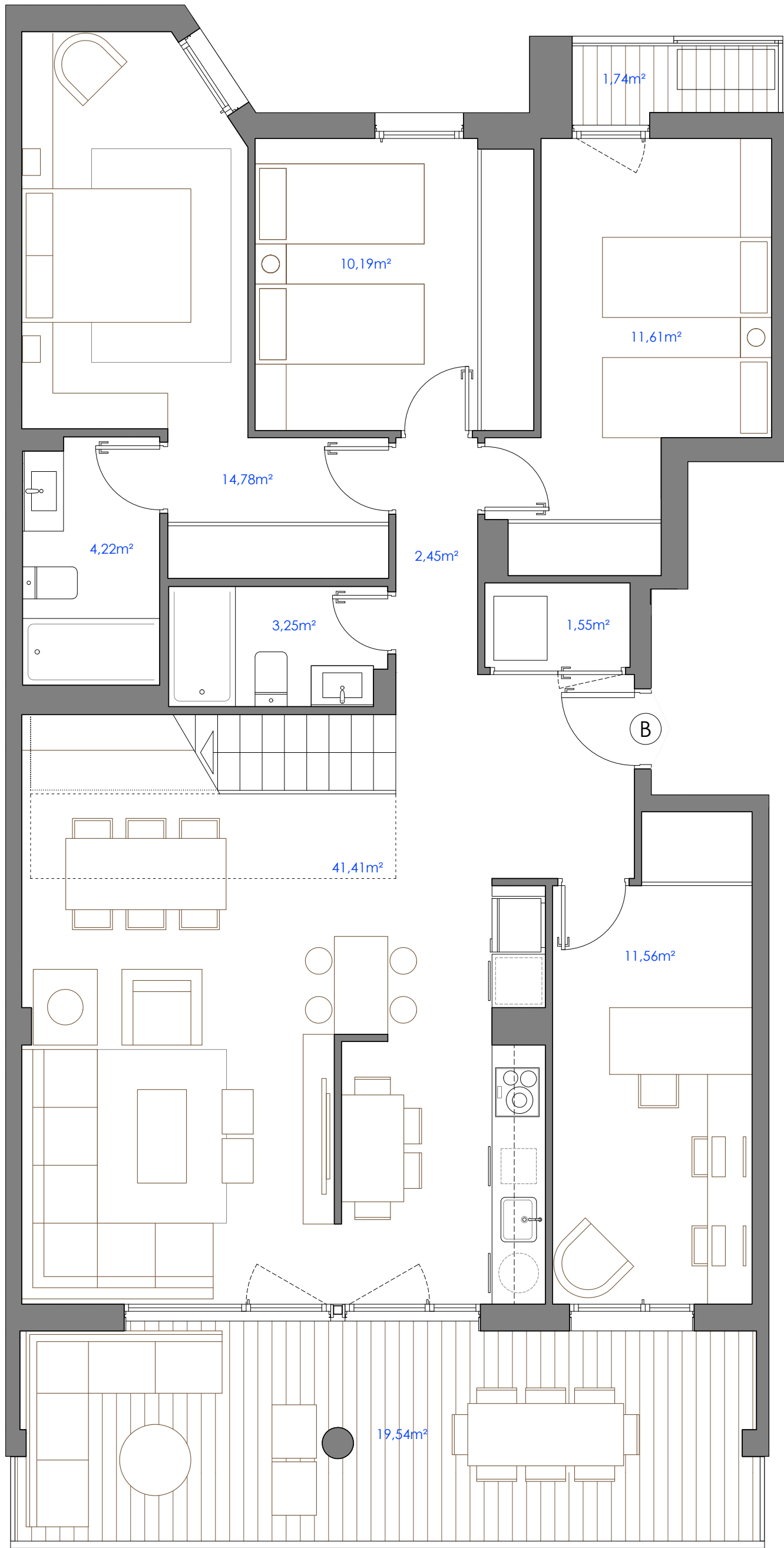


S.útil cerrada	=	106,74 m ²
S.útil abierta	=	21,28 m ²
S. útil total	=	128,02 m ²
Uso solarium	=	78,68 m ²
Total pisable	=	206,70 m ²



S.útil cerrada	=	106,74 m ²
S.útil abierta	=	21,28 m ²
S. útil total	=	128,02 m ²
Uso solarium	=	78,68 m ²
Total pisable	=	206,70 m ²

